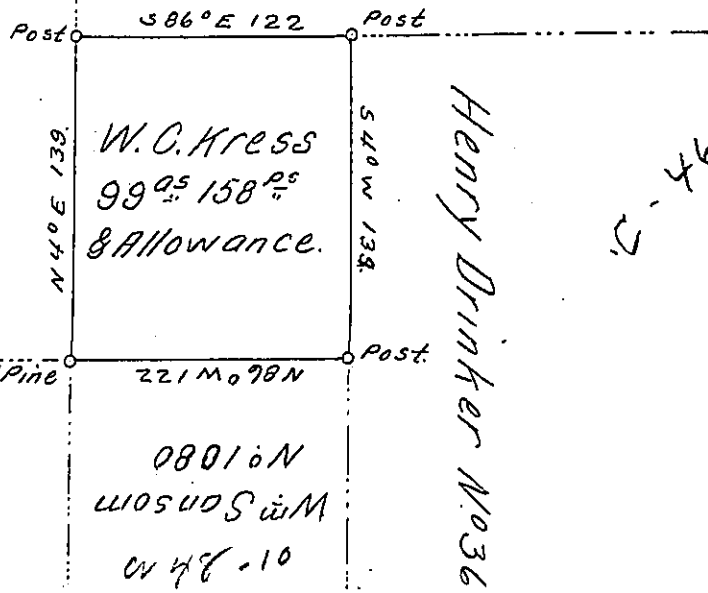


C-46-15-1

X-216

William Sanson  
No 1089



C-46-171

Henry Drinker. No 3634

Henry Drinker No 3641

Draft of a tract of land situated in Leidy Township, Clinton County, containing ninety nine acres, one hundred and fifty eight perches and allowance for the use of roads &c. Surveyed on the 29<sup>th</sup> day of January A. D. 1884 in pursuance of a warrant granted to W. C. Kress bearing date on the 25<sup>th</sup> day of January A. D. 1884 for ninety acres.

To Hon. J. Simpson Africa } W<sup>m</sup> P. Mitchell, for  
Secretary of Internal Affairs } F. J. David, County Surveyor.

Examined and approved this 30<sup>th</sup> day of January A. D. 1884.  
F. J. David County Surveyor.

IN TESTIMONY that the above is a copy of the original remaining on file in the Department of Internal Affairs of Pennsylvania, made conformably to an Act of Assembly approved the 16th day of February, 1833, I have hereunto set my Hand and caused the Seal of said Department to be affixed at Harrisburg, this first day of August 1905.

*Joseph R. Brown*  
Secretary of Internal Affairs.